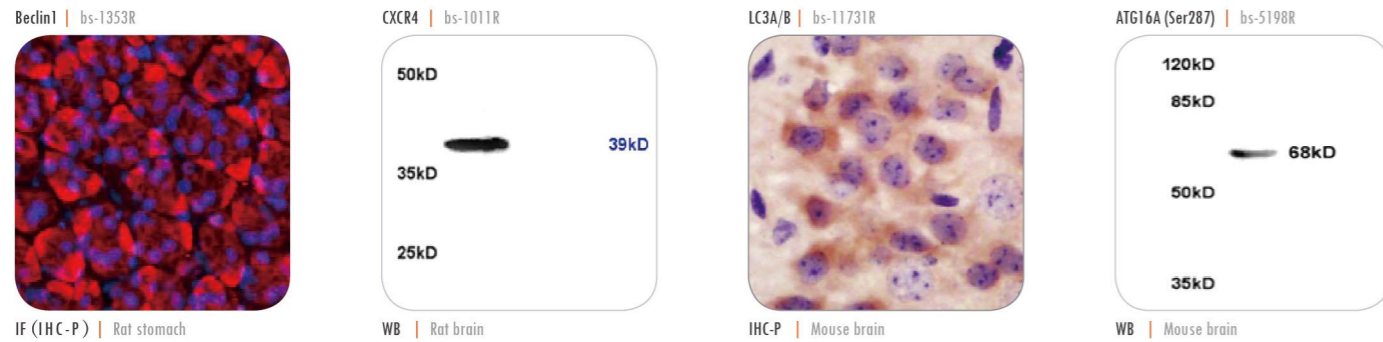


AUTOPHAGY

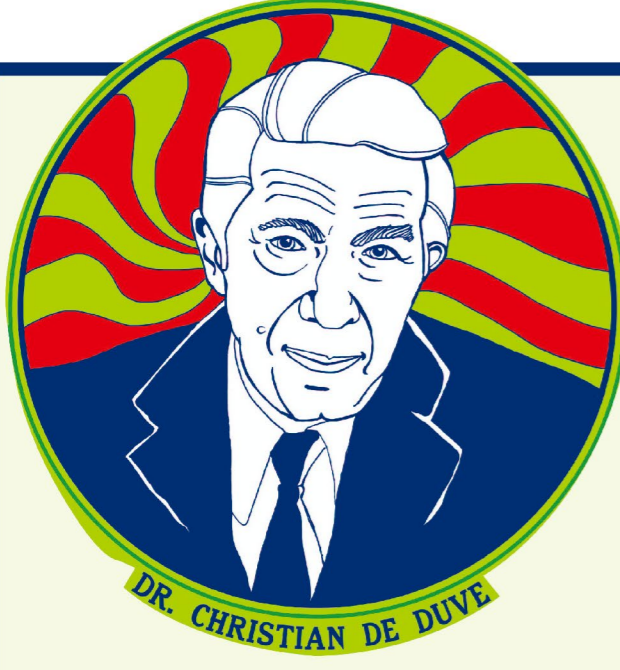




TARGET	APPLICATION	SPECIES	CATALOG
AMBRA1	IHC-P	Hu, Ms, Rt	bs-3830R
APG5L	WB, IHC-P	Hu, Ms, Rt	bs-4005R
APG7	WB, IHC-P	Hu, Ms, Rt	bs-2432R
Atg12	WB, IHC-P	Hu, Ms, Rt	bs-4012R
ATG1/ULK1	WB, IHC-P	Hu, Ms, Rt	bs-3602R
ATG1 (Ser556)	WB, IHC-P	Hu, Ms, Rt	bs-3464R
ATG13	WB, IHC-P	Hu, Ms, Rt	bs-3864R
ATG16A (Ser287)	WB, IHC-P	Hu, Ms, Rt	bs-5198R
ATG16L	WB, IHC-P	Hu, Ms, Rt	bs-4007R
ATG3	IHC-P	Hu, Ms, Rt	bs-4013R
ATG4B	WB, IHC-P, ICC	Hu, Ms, Rt	bs-1384R
ATG4D	WB, IHC-P	Hu, Ms, Rt	bs-4009R
ATG9A	WB, IHC-P	Hu, Ms, Rt	bs-4010R
ATG9A (Ser735)	IHC-P	Hu, Rt	bs-5199R
ATG9B	WB, IHC-P	Ms, Rt	bs-4011R

TARGET	APPLICATION	SPECIES	CATALOG
ATG101	IHC-P	Hu	bs-20220R
Beclin 1	WB, IHC-P, ICC, IF	Hu, Ms, Rt	bs-1353R
CXCR4	WB, IHC-P, FCM	Hu, Ms, Rt	bs-1011R
eIF4E	IHC-P, ICC	Hu	bs-4979R
LAMP-1	WB, IHC-P, FCM	Hu, Ms, Rt	bs-1970R
LAMP2	WB, IHC-P	Hu, Ms, Rt	bs-2379R
LAMP3	IHC-P	Hu	bs-2556R
LC3	WB, IHC-P	Hu, Ms, Rt	bs-8878R
LC3A/B	WB, IHC-P, IF(IHC-P)	Hu, Ms, Rt	bs-11731R
MAP 1A/1B LC3 Alpha/Beta	IHC-P	Hu, Ms, Rt	bs-4309R
MAP1A/MAP1B LC3 A/B	IHC-P	Hu, Ms, Rt	bs-2912R
PI 3 Kinase Class 3	WB, IHC-P	Hu, Ms, Rt	bs-4159R
Rab24	IHC-P	Hu, Ms, Rt	bs-3868R
RB1CC1	IHC-P	Hu	bs-8165R
SQSTM1	WB, IHC-P	Hu, Ms, Rt, Bv	bs-2951R

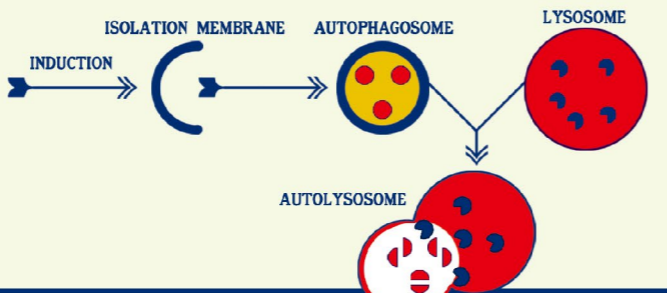
WB - Western Blot | IHC-P - Immunohistochemistry Paraffin | IHC-F - Immunohistochemistry Frozen | ICC - Immunocytochemistry | IF - Immunofluorescence | E - Enzyme Linked Immunosorbent Assay | FCM - Flow Cytometry | Bv - Bovine | Ch - Chicken | Dg - Dog | Gt - Goat | Gp - Guinea pig | Hu - Human | Ms - Mouse | Pg - Pig | Rt - Rat



AUTOPHAGY

••••• {from the Greek auto-, "self" and phagein, "to eat"} •••••

Autophagy was coined by Dr. Christian deDuve during a symposium in 1963. It describes a homeostatic process by which cells break down their own components, through sequestration and transport of organelles and macromolecules to the lysosomes for degradation.



References

[IF=12.33] Pandey, Aseem, et al. "Global Reprogramming of Host Kinase Signaling in Response to Fungal Infection." *Cell Host & Microbe* 21.5 (2017): 637-649.(bs-3464R-PE, FCM)

[IF=9.11] Sun, Ming-Xia, et al. "Porcine reproductive and respiratory syndrome virus induces autophagy to promote virus replication." *Autophagy* 8.10 (2012): 1434-1447.(bs-1970R, IF(ICC))

[IF=8.98] Pei, Guangchang, et al. "Renal Interstitial Infiltration and Tertiary Lymphoid Organ Neogenesis in IgA Nephropathy." *Clinical Journal of the American Society of Nephrology* (2013): CJN-01150113.(bs-1011R, IHC-P)

[IF=5.98] Luks, Lisanne, et al. "Novel insights into renal d-amino acid oxidase accumulation: propiverine changes DAAO localization and peroxisomal size in vivo." *Archives of Toxicology* (2016): 1-11.(bs-2379R, IHC-P)

[IF=5.74] Kuo, Hsiao-Mei, et al. "Altered Mitochondrial Dynamics and Response to Insulin in Cybrid Cells Harboring a Diabetes-susceptible Mitochondrial DNA Haplogroup." *Free Radical Biology and Medicine* (2016).(bs-2951R, WB)

[IF=4.65] Banerjee, Pallavi, et al. "Heme Oxygenase-1 Promotes Survival of Renal Cancer Cells through Modulation of Apoptosis-and Autophagy-regulating Molecules." *Journal of Biological Chemistry* 287.38 (2012): 32113-32123.(bs-1353R-FITC, IF(ICC))

[IF=3.85] Li, Yue, et al. "Autophagy contributes to 4-Amino-2-Trifluoromethyl-Phenyl Retinate-induced differentiation in human acute promyelocytic leukemia NB4 cells." *Toxicology and Applied Pharmacology* (2017).(bs-4005R, WB)

[IF=3.84] Shen, P. P., et al. "Cortical Spreading Depression (CSD) Preconditioning Mediates Neuroprotection against Ischemic Stroke by Inducing AMP - activated Protein Kinase - dependent Autophagy in a Rat Cerebral Ischemic/reperfusion Injury Model." *Journal of Neurochemistry* (2016).(bs-3602R, WB)

[IF=2.78] Chen, Yunbo, et al. "β-Asarone prevents autophagy and synaptic loss by reducing ROCK expression in asenescence-accelerated prone 8 mice." *Brain research* 1552 (2014): 41-54.(bs-8878R, IHC-P, WB)

[IF=2.66] Song, Fuyong, et al. "Involvement of autophagy in tri-ortho-cresyl phosphate-induced delayed neuropathy in hens." *Neurochemistry International* (2013).(bs-3830R, WB)

[IF=2.66] Song, Fuyong, et al. "Involvement of autophagy in tri-ortho-cresyl phosphate-induced delayed neuropathy in hens." *Neurochemistry International* (2013).(bs-2432R, WB)

[IF=2.66] Song, Fuyong, et al. "Involvement of autophagy in tri-ortho-cresyl phosphate-induced delayed neuropathy in hens." *Neurochemistry International* (2013).(bs-4012R, WB)

[IF=2.42] Lin, Chia-Fa, et al. "Quercetin-Rich Guava (Psidium guajava) Juice in Combination with Trehalose Reduces Autophagy, Apoptosis and Pyroptosis Formation in the Kidney and Pancreas of Type II Diabetic Rats." *Molecules* 21.3 (2016): 334.(bs-2912R-Cy5, IF(IHC-P))

[IF=2.19] Cui, Xiaodong, et al. "Changes of intracellular Ca²⁺ in quercetin-induced autophagy progression." *Acta Biochimica et Biophysica Sinica* (2015): gmv096.(bs-11731R, WB)